

Rochester Area Federation's

VIRTUAL FUN SQUARE DANCE

FRIDAY DECEMBER 4, 2020 AT 7PM

Location: *Safely in Your Home!*

Fun Square Dancing for all RAF Square Dancers...Including Recent Grads



Zoom Square Dancing is coming to RAF Clubs

Featuring 2 Couple Square Dance Calls by our Local Callers

- Local Callers: Ron Brown, Mike Callahan, Dave Eno, Jim Gotta and Gil Porter
- 2 couples dancing in-person
- 1 couple or solos with phantoms
- Basic Mainstream level calls
- Intro to Virtual Dancing will be provided

If interested Contact your Club President or your RAF Representative to obtain the Zoom link.

If you don't already have it, the Zoom application will automatically load onto your PC, Laptop, IPad, Chromebook or Smart Phone when you click on the Zoom link

Plan for future Virtual Square Dances on Fridays at 7pm! Next Dance on 12/11 7pm

Not sure if you want to dance on Zoom, no problem, come and watch the dancing anyway!

Questions? contact Debbie & Jeff Blood Phone: 585-880-9161 Email: dfbjvhome@aol.com

Live Lively -



Square Dance!

TWO-COUPLE DANCING AT HOME – FLOOR SPACE

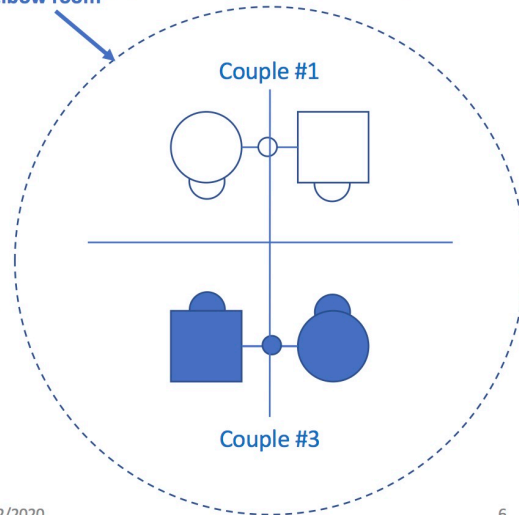
TWO COUPLES CAN DANCE IN AN **8-FOOT CIRCLE** (DASHED LINE IN THE DIAGRAM)

As Least
8-ft Diameter
plus “elbow room”

CALLER / ZOOM SCREEN
(FRONT)

THIS DIAGRAM IS INTENDED AS AN AID IN VISUALIZING TWO-COUPLE DANCER POSITIONS ON THE FLOOR.

- INNER BOXES & CIRCLES SHOW DANCERS' HOME POSITIONS.
- IN 2-COUPLE DANCING, “HOME” IS ALWAYS AT THE HEADS POSITION, FACING (OR WITH BACK TO) THE MUSIC.
- WHILE DANCING, YOU MAY BE TEMPORARILY SEPARATED, AND YOU MAY BECOME TEMPORARILY “SIDES,” BUT HOME IS “HEADS.”
- THE CROSSED VERTICAL & HORIZONTAL LINES SHOW DANCER ALIGNMENT FOR AN “OCEAN WAVE” OR A “DIAMOND” OR A “2-FACED LINE” FORMATION.



RAF TIP SHEET – 11/12/2020

6

ONE-COUPLE DANCING AT HOME – FLOOR SPACE

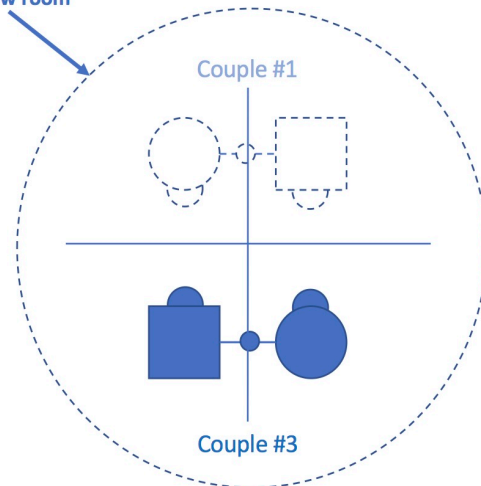
ONE COUPLE CAN DANCE IN A **6-FOOT CIRCLE** (DASHED LINE IN THE DIAGRAM)

At Least
6-ft Diameter
plus “elbow room”

CALLER / ZOOM SCREEN
(FRONT)

THIS DIAGRAM IS INTENDED AS AN AID IN VISUALIZING DANCER (AND PHANTOM) POSITIONS ON THE FLOOR.

- CIRCLES SHOW DANCERS' HOME POSITIONS.
- IN 2-COUPLE DANCING, “HOME” IS ALWAYS AT THE HEADS POSITION, FACING (OR WITH BACK TO) THE MUSIC.
- THE CROSSED VERTICAL & HORIZONTAL LINES SHOW ALIGNMENT OF DANCERS FOR AN “OCEAN WAVE” OR “DIAMOND” OR “2-FACED LINE” FORMATION.
- IF YOU ARE DANCING AS A SINGLE COUPLE (OR SOLO), IT'S HELPFUL TO BE DEFINITE ABOUT WHERE YOU ARE IN THIS PATTERN BY VISUALIZING IT ON YOUR FLOOR.
- THAT WAY, YOU WILL WASTE LESS EFFORT IMAGINING WHERE THE “PHANTOM” DANCERS ARE!



RAF TIP SHEET – 11/12/2020

7